

PROHIBITED WATERBODIES  
FOR REMOVAL OF PRE-CUT TIMBER

Recovery of pre-cut timber shall be prohibited in those waterbodies that are considered pristine due to water quality or clarity or where the recovery of pre-cut timber will have a negative impact on, or be an interruption to, navigation or recreational pursuits, or significant cultural resources. Recovery shall be prohibited in the following waterbodies or described areas:

1. Alexander Springs Run
2. All Aquatic Preserves designated under chapter 258, F.S.
3. All State Parks designated under chapter 258, F.S.
4. Apalachicola River between Woodruff lock to I-10 during March, April and May
5. Chipola River within state park boundaries
6. Choctawhatchee River from the Alabama Line 3 miles south during the months of March, April and May.
7. Econfina River from Williford Springs south to Highway 388 in Bay County.
8. Escambia River from Chumuckla Springs to a point 2.5 miles south of the springs
9. Ichetucknee River
10. Lower Suwannee River National Refuge
11. Merritt Mill Pond from Blue Springs to Hwy. 90
12. Newnan's Lake
13. Ocean Pond – Osceola National Forest, Baker County
14. Oklawaha River from the Eureka Dam to confluence with Silver River
15. Rainbow River
16. Rodman Reservoir
17. Santa Fe River, 3 Miles above and below Ginnie Springs
18. Silver River
19. St. Marks from Natural Bridge Spring to confluence with Wakulla River
20. Suwannee River within state park boundaries
21. The Suwannee River from the Interstate 10 bridge north to the Florida Sheriff's Boys Ranch, inclusive of section 4, township 1 south, range 13 east, during the months of March, April and May.
22. Wacissa River
23. Wakulla River
24. Wekiva River
25. White River

No recovery will be allowed within state park boundaries.

No recovery allowed within the bounds of a state forest without the site specific approval of the Division of Forestry.

No recovery will be allowed in any landlocked freshwater lake effective August 25, 2000 until further review by the Governor and Cabinet.

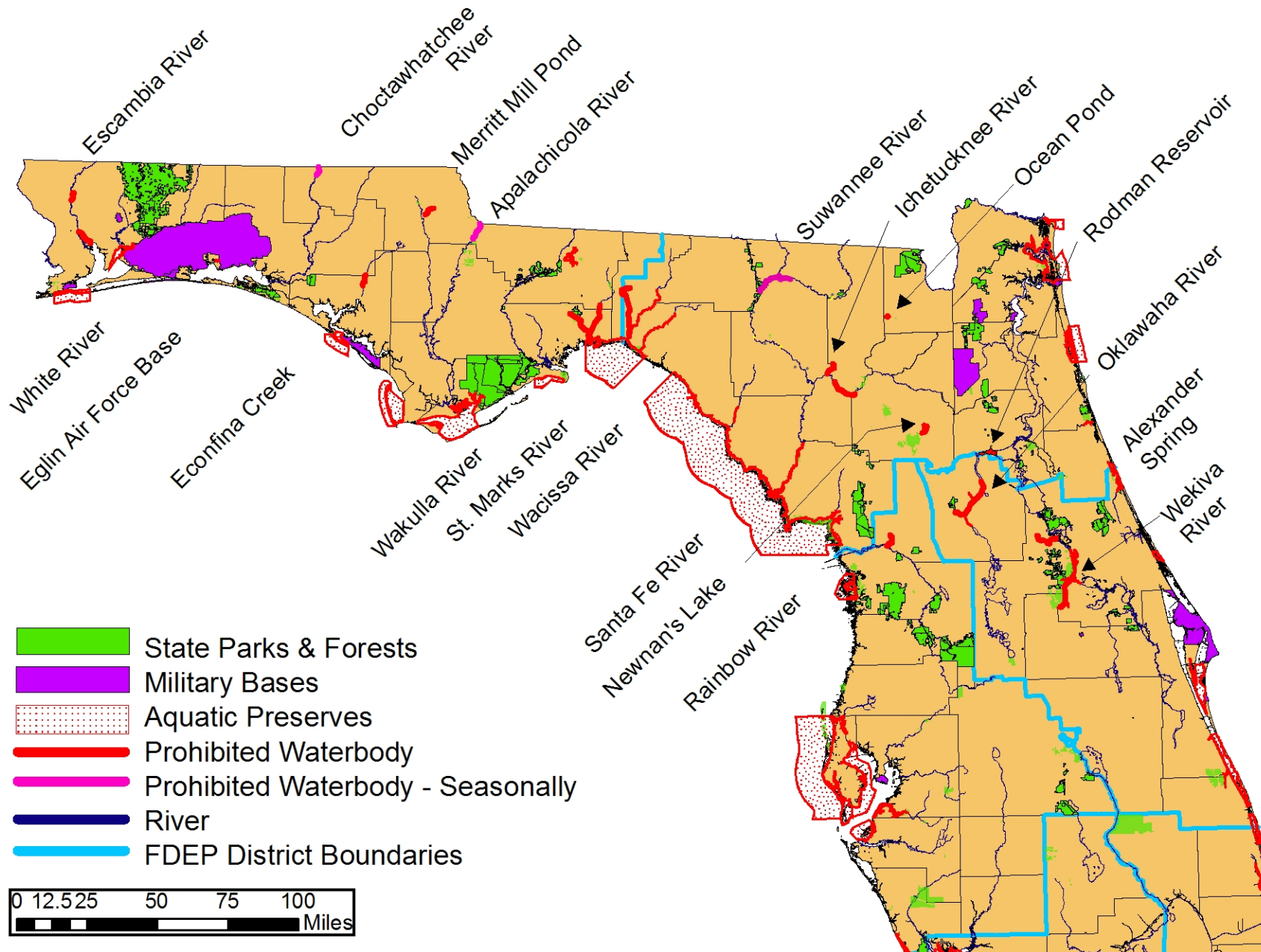
No recovery will be permitted from any waters within Eglin Air Force Base due to public safety concerns due to the possible presence of unexploded ordnance.

Due to special concerns regarding certain listed mussel species in these waters if during the course of recovery you observe a mussel colony you are to stop recovery in that area immediately and report the location to the Department of Environmental Protection district office.

Additional waterbodies and/or sections of waterbodies may be added at any time due to environmental considerations. Upon changes or updates to this list of restricted waterbodies, copies will be mailed to all holders of a trustees Use Agreement to recover precut timber from state owned lands.

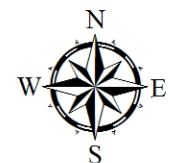
[document1-aug2000]

# Florida Department of Environmental Protection Prohibited Waterbodies



This map is a representation of the current Use Agreement, Attachment B, Prohibited Waterbodies for Removal of Pre-cut Timber. It was produced by FDEP using their databases and is intended only for displaying the waterbody status for harvesting pre-cut submerged timber. The lines are digitized and may not accurately represent the restricted areas. This is to be used only as a tool for general knowledge. This map may contain data of different scales accuracy, and/or covering different time periods. Due to the large scale of this map, not all area boundaries may appear.

For more information about this map contact:  
Sara Merritt at  
(850) 595-0617.



Map Produced:  
January 2012